

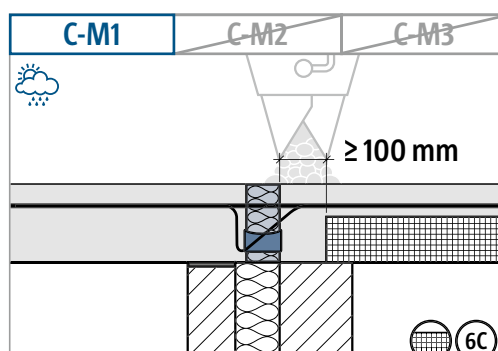
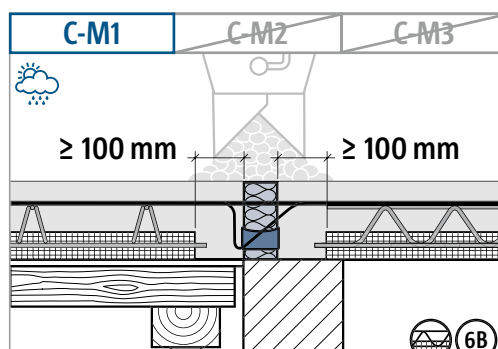
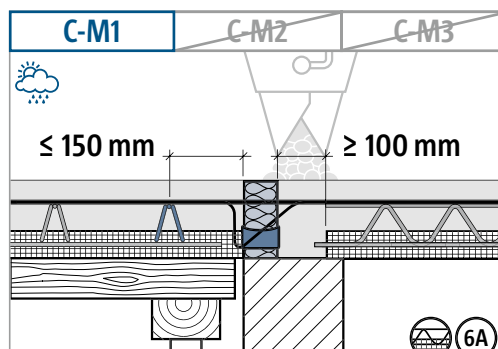
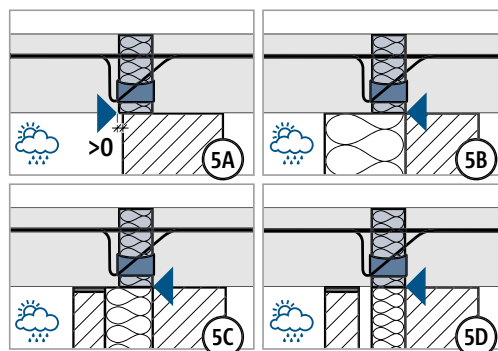
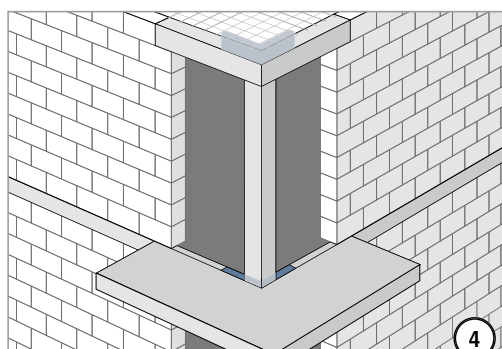
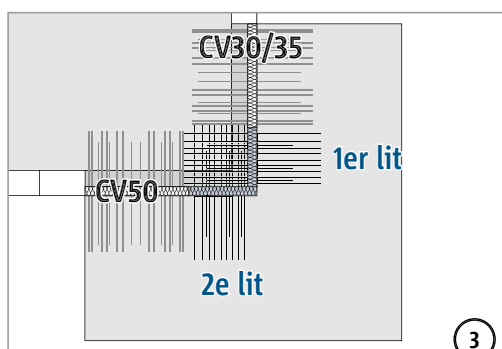
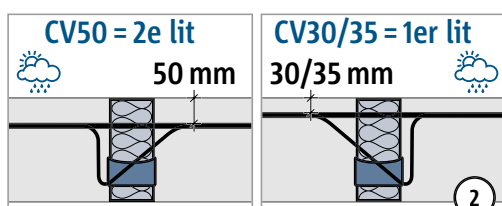
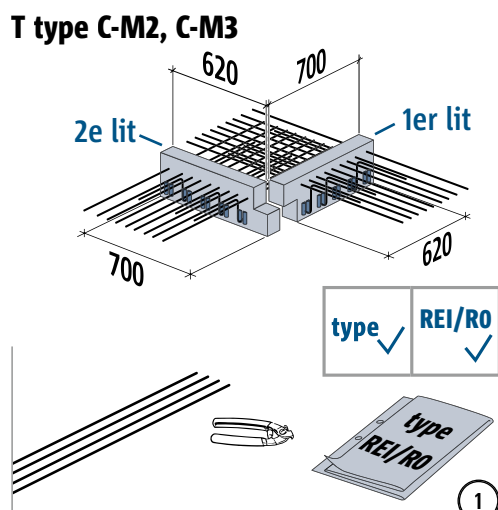
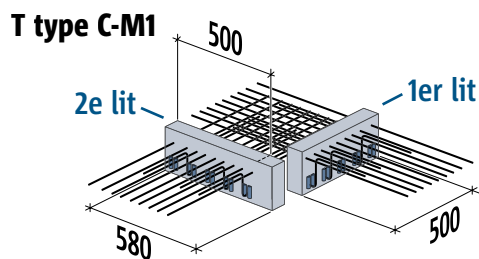
Schöck Isokorb® T type C



T
type C

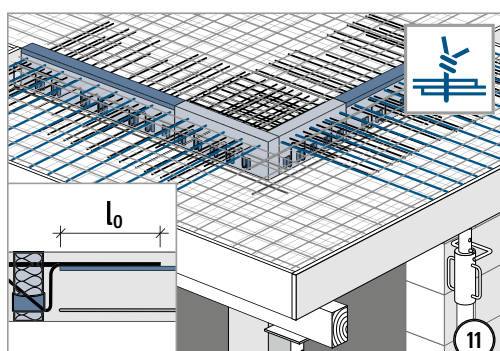
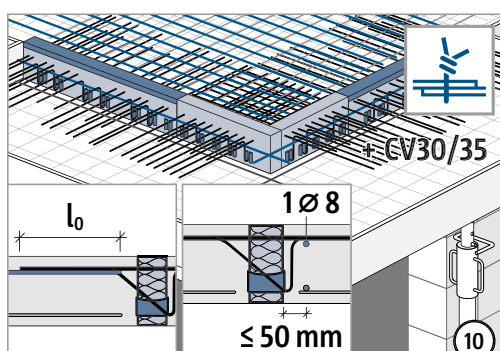
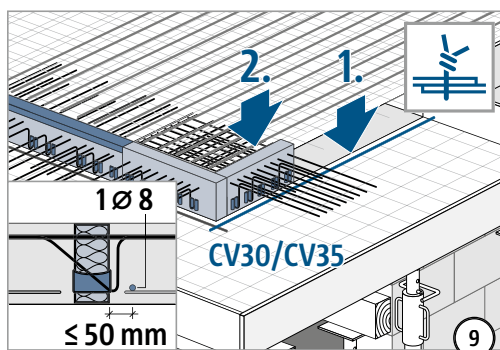
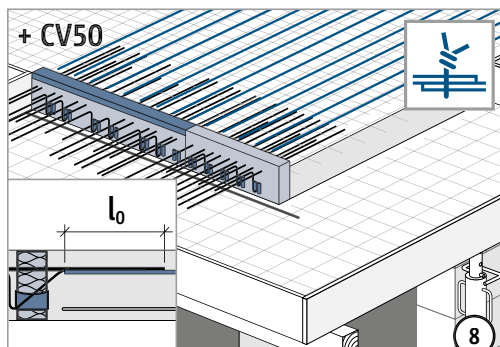
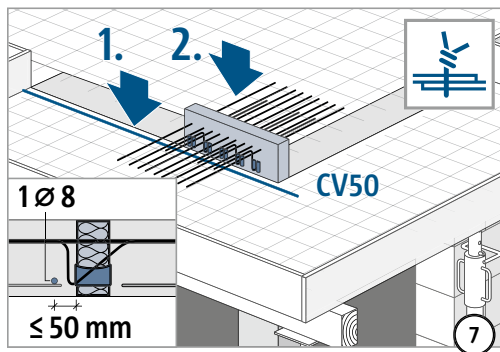
Béton armé – Béton armé

Instructions de mise en œuvre



(6A) – (6C) Remplir obligatoirement le joint de compression par du béton coulé sur place ! Largeur du joint $\geq 100 \text{ mm}$.

Instructions de mise en œuvre

T
type C

Béton armé – Béton armé